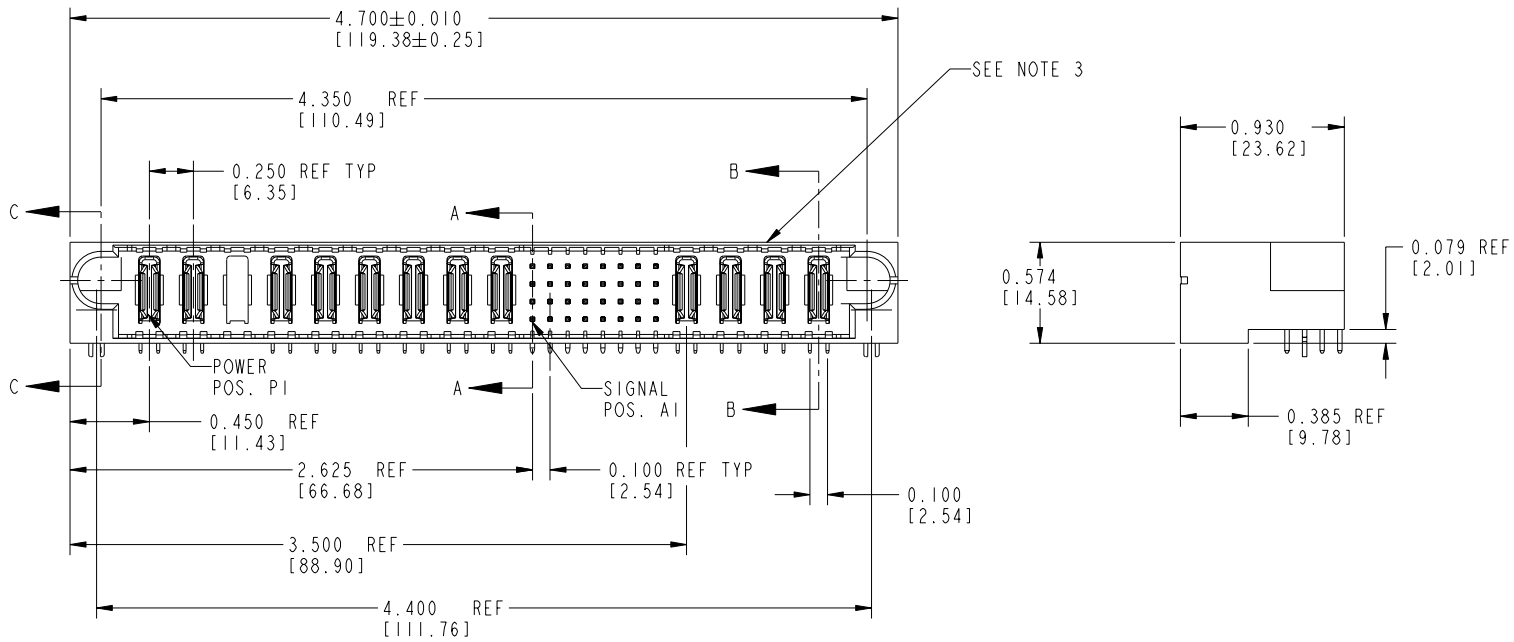


Tous droits strictement réservés. Reproduction ou communication à des tiers interdite sous quelque forme que ce soit sans autorisation écrite du propriétaire. Propriété de FCI. Droits de reproduction FCI.

All rights strictly reserved. Reproduction or issue to third parties in any form whatever is not permitted without written authority from the proprietor. Property of FCI. Copyright FCI.

PRODUCT NUMBER
SEE TABLE



mat'l code SEE NOTE 1				tolerances unless otherwise specified		CUSTOMER COPY	 www.fciconnect.com	
ltr	ecn no.	dr	date	linear	.XX±.01/.X±.3	projection 	title 9P + 32S + 4P RIGHT ANGLE SOLDER HEADER	
A	V90939	CHB	04-16-99		.XXX±.005/.X±.13		product family PwrBlade	
B	V91276	CHB	05-19-99		.XXX±.0020/.XXX±.050	INCH / MM scale 1:1	code 213	
C	V94056	CHB	10-20-99	angles	0°±2°		size 51632	
D	V11193	JRW	04-16-01	dr	C. BAROT 05-24-99	SHEET 1 OF 3		
E	V12541	DAI	12-05-01	enr	J. BROWN 05-24-99	cage code 22526		
F	DG06-0011	CS	01/09/06	chr	J. BROWN 05-24-99			
sheet index		revision sheet	F 1	F 2	F 3			

form no. 7530-001-103

cage code 22526

PDM: Rev:F

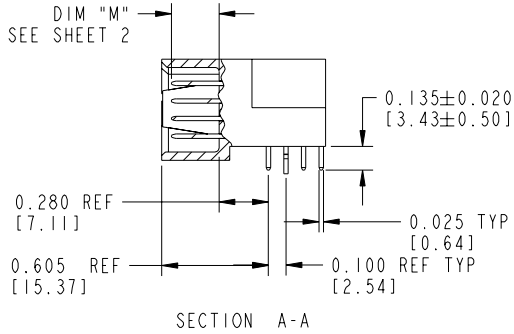
STATUS:Released

Printed: Aug 11, 2007

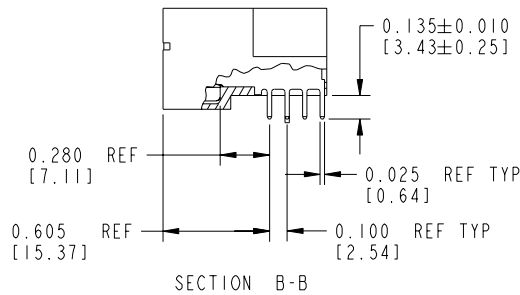
Tous droits strictement réservés. Reproduction ou communication à des tiers interdite sous quelque forme que ce soit sans autorisation écrite du propriétaire. Propriété de c FCI. Droits de reproduction FCI.

All rights strictly reserved. Reproduction or issue to third parties in any form whatever is not permitted without written authority from the proprietor. Property of FCI. Copyright FCI.

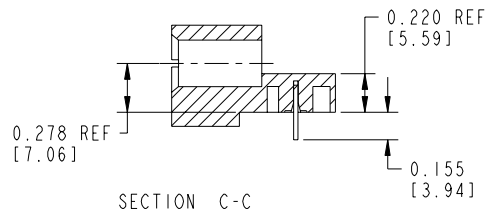
PRODUCT NUMBER
SEE TABLE



SECTION A-A



SECTION B-B

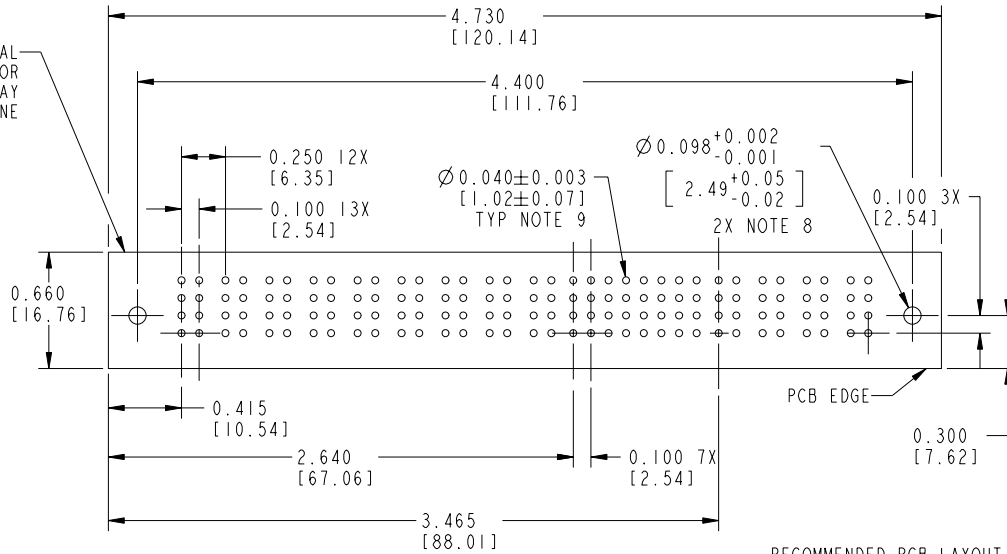


SECTION C-C

- CONNECTOR NOTES:
- HOUSING MATERIAL: UL 94 V-0 GLASS FILLED HIGH TEMP THERMOPLASTIC
SIGNAL CONTACT MATERIAL: COPPER ALLOY
POWER CONTACT MATERIAL: COPPER ALLOY
 - PLATING:
51632, 51632LF, PLATING SPEC SEE PRINT: 100064183.
 - MANUFACTURER'S NAME, P/N, AND DATE CODE TO APPEAR ON THIS SURFACE
 - PRODUCT SPECIFICATION GS-12-149

- PCB NOTES:
- ALL DIMENSIONS ARE BASIC UNLESS OTHERWISE SPECIFIED.
 - ALL THROUGH HOLES ARE LOCATED WITH A TRUE POSITION OF 0.004 [0.10]
 - ALL HOLE DIAMETERS ARE FINISHED HOLE SIZE
 - Ø0.098 [2.49] THROUGH HOLES ARE UNPLATED
 - Ø0.0453±0.0010 [1.151±0.025] DRILLED HOLES PLATED WITH 0.0003 [0.008] MIN SnPb OVER 0.001 [0.03] TO 0.003 [0.08] Cu PLATING TO ACHIEVE A Ø0.040±0.003 [1.02±0.07] HOLE.

MECHANICAL CONNECTOR STAY AWAY ZONE

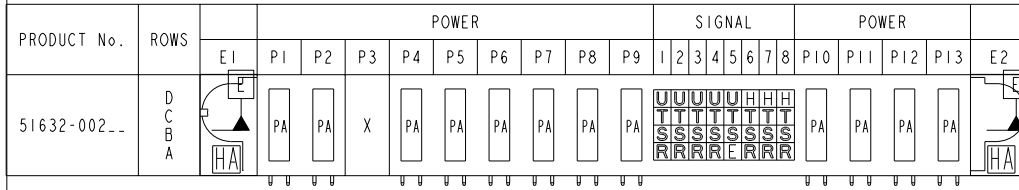
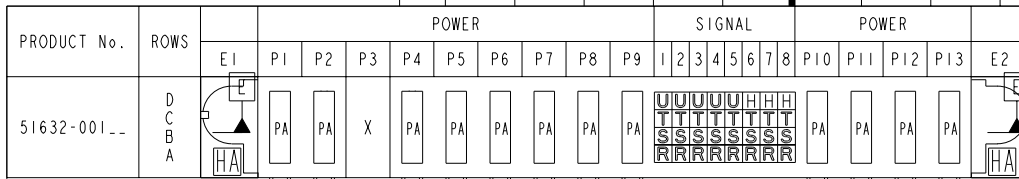


RECOMMENDED PCB LAYOUT

mat'l code SEE NOTE 1				tolerances unless otherwise specified		CUSTOMER COPY		 www.fciconnect.com	
ltr	ecn no.	dr	date	linear	.XX±.01/.X±.3	projection	title 9P + 32S + 4P		
f					.XXX±.005/.X±.13		RIGHT ANGLE SOLDER HEADER		
				angles	.XXX±.0020/.XXX±.050		product family	PwrBlade	code
				dr	0°±2°	INCH / MM	size	dwg no	213
				enrg	C. BAROT 05-24-99	scale	51632		SHEET
				chr	J. BROWN 05-24-99	1:1			2
				appd	J. BROWN 05-24-99				
sheet index	revision sheet								

Tous droits strictement réservés. Reproduction ou communication à des tiers interdite sous quelque forme que ce soit sans autorisation écrite du propriétaire. Propriété de FCI. Droits de reproduction FCI.

All rights strictly reserved. Reproduction or issue to third parties in any form whatever is not permitted without written authority from the proprietor. Property of FCI. Copyright FCI.



CODE	DIM "M" ±0.010 [0.25]		CONTACT TYPE
E	0.220	[5.59]	SIGNAL
H	0.220	[5.59]	SIGNAL
R	0.270	[6.86]	SIGNAL
S	0.270	[6.86]	SIGNAL
T	0.270	[6.86]	SIGNAL
U	0.270	[6.86]	SIGNAL
PA	N/A	[N/A]	POWER
HA	N/A	[N/A]	HOLD-DOWN
X	N/A	[N/A]	OMITTED

mat'l code SEE NOTE 1				tolerances unless otherwise specified		CUSTOMER COPY		 www.fciconnect.com	
ltr	ecn no.	dr	date	linear	.XX±.01/.X±.3	projection	title 9P + 32S + 4P RIGHT ANGLE SOLDER HEADER		
f				angles	.XXX±.005/.X±.13	 INCH / MM	product family PwrBlade		code 213
				dr	.XXX±.0020/.XXX±.050		size	dwg no	SHEET 3
				enr	0°±2°	scale	51632		
				chr		1:1			
				appd	C. BAROT 05-24-99				
					J. BROWN 05-24-99				
sheet index	revision sheet							cage code	22526

form no. 7530-001-103

cage code 22526

PDM: Rev:F

STATUS:Released

Printed: Aug 11, 2007